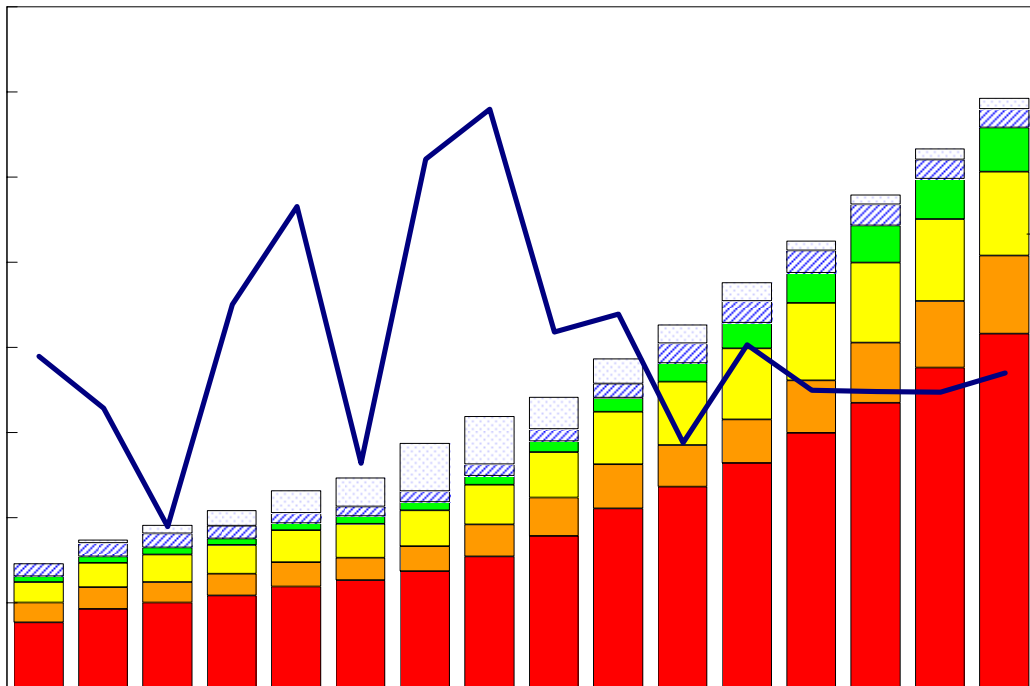


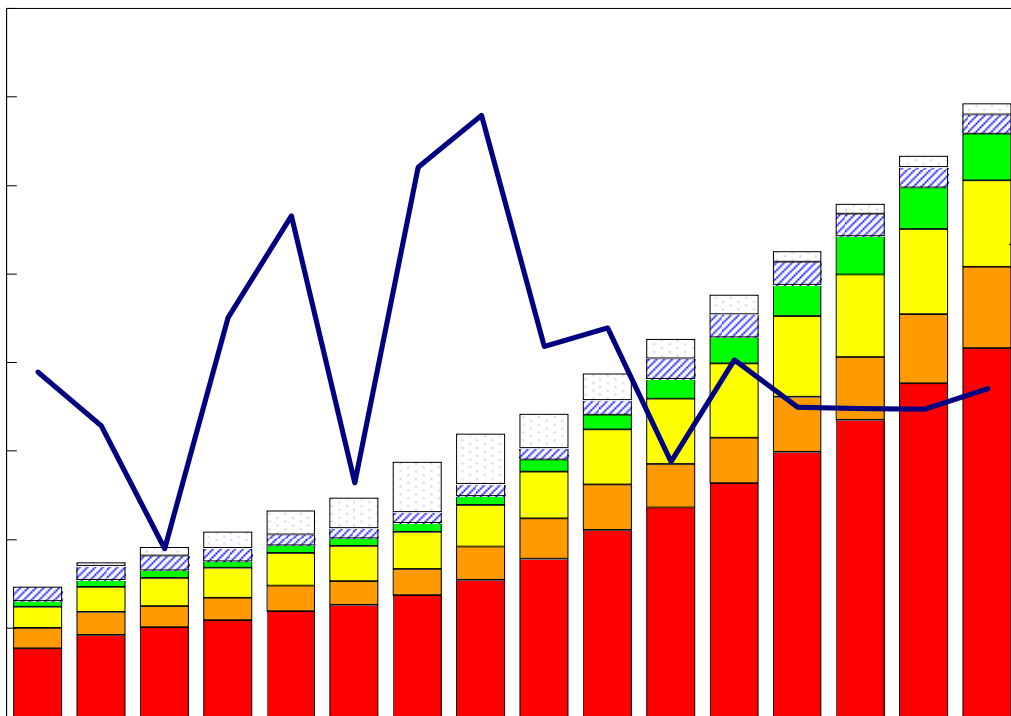
Major Economic Indicators for Taiwan



Chung-Hua Institution for Economic Research
January 2010

臺灣重要經濟變動指標

Major Economic Indicators for Taiwan



經濟展望中心 編製

The Center for Economic Forecasting

目次

Index

臺灣經濟預測.....I	Taiwan's Macroeconomic Forecasts.....I
表一：主要總體經濟指標.....2-3	Table 1 : GDP Components by Expenditure.....2-3
表二：各業產值概況.....4-5	Table 2 : GDP Components by Industry.....4-5
表三：生產概況.....6	Table 3 : Industry Indicators.....6
表四：景氣概況.....7	Table 4 : Cyclical Indicators.....7
表五：物價與金融概況.....8-9	Table 5 : Prices and Financial Situation.....8-9
表六：臺灣進出口貿易.....10	Table 6 : Foreign Trade Values.....10
表七：臺灣對美國之進出口狀況.....11	Table 7 : Trade with the United States11
表八：臺灣對日本之進出口狀況.....12	Table 8 : Trade with Japan.....12
表九：臺灣對德國之進出口狀況.....13	Table 9 : Trade with Germany.....13
表十：臺灣對香港之進出口狀況.....14	Table 10 : Trade with Hong Kong14
表十一：兩岸經貿.....15	Table 11 : Trade across the Taiwan Straits.....15

Taiwan's Macroeconomic Forecasts

	2010				2008年	2009	2010
	Year 2009 Quarterly				Annually		
	1	2	3	4			
	Q1	Q2	Q3	Q4	2008	2009	2010
GDP, GNP (2001), GDP, GNP and Major Components, Billions of 2001 NT Dollars							
GDP, Real GDP	3,119.23	3,246.40	3,430.66	3,479.48	13,070.90	12,684.62	13,275.77
, yoy()	8.29	5.70	4.08	1.25	0.73	-2.96	4.66
GNP, Real GDP	3,252.57	3,324.99	3,748.73	3,556.37	13,370.81	13,067.19	13,612.66
, yoy()	8.11	5.15	3.23	0.84	0.50	-2.27	4.17
GNP, per capita GNP^[1]	4,517.96	4,412.10	4,572.79	5,010.59	18,025.30	17,028.15	18,513.45
, yoy()	13.15	9.20	6.99	6.13	2.01	-5.53	8.72
, Private Consumption	1,877.69	1,827.81	1,905.64	1,897.81	7,357.07	7,394.20	7,508.94
, yoy()	1.81	1.61	1.30	1.50	-0.57	0.50	1.55
, Total Fixed Investment	483.24	529.09	620.87	637.39	2,439.03	2,151.15	2,270.60
, yoy()	9.20	7.17	6.37	0.98	-11.17	-11.80	5.55
, Private Fixed Investment	366.38	386.02	460.27	418.07	1,880.20	1,503.39	1,630.74
, yoy()	11.48	10.51	8.38	4.32	-13.78	-20.04	8.47
, Exports, gds+serv	2,062.88	2,254.44	2,364.49	2,359.38	9,172.14	8,163.49	9,041.19
, yoy()	23.29	13.23	6.14	3.87	0.56	-11.00	10.75
, Imports, gds+serv	1673.62	1796.89	1873.65	1860.38	7559.29	6428.69	7204.53
, yoy()	27.39	13.54	7.26	4.19	-3.12	-14.96	12.07
其它總體經濟變數, Other Macroeconomic Variables							
(fob,), Merchandise Export(fob, US \$bn)*	494.47	566.79	616.18	650.01	2556.29	2032.3	2327.45
, yoy()	22.03	18.18	11.35	9.41	3.63	-20.5	14.52
(cif,), Merchandise Import (cif, US \$bn)*	407.86	483.6	541.32	577.72	2404.48	1742.29	2010.49
, yoy()	27.25	18.18	10.91	10.14	9.67	-27.54	15.39
GDP , GDP Deflator (2001=100)	102.41	97.02	95.83	101.64	97.19	98.72	99.23
, yoy()	-1.16	-0.09	0.41	2.94	-2.39	1.57	0.51
, Wholesale Price Index (2006=100)	102.85	104.13	107.50	106.45	111.95	101.90	105.23
, yoy()	2.97	4.08	3.50	2.53	5.15	-8.97	3.27
, Consumer Price Index (2006=100)	103.67	105.24	106.86	106.77	105.39	104.51	105.64
, yoy()	0.26	1.19	1.48	1.36	3.53	-0.83	1.07
M2 (), Money Stock (M2)	30,017.95	30,332.75	30,431.59	31,734.50	26,820.14	28,846.09	30,629.20
, yoy()	6.30	5.54	5.49	7.37	2.67	7.55	6.18
, Exchange Rate(NT\$/US\$)	32.00	31.75	31.63	31.26	31.53	33.00	31.66
, yoy() ^[3]	5.83	4.16	3.56	2.62	3.98	-4.65	4.07
, 31-90 day Commercial Paper Rate	0.82	0.87	0.93	0.98	1.92	0.32	0.90
, yoy()	155.02	420.24	348.56	67.61	0.96	-83.36	181.01
(%), Unemployment Rate(%)	5.81	5.76	5.91	5.74	4.14	5.86	5.80

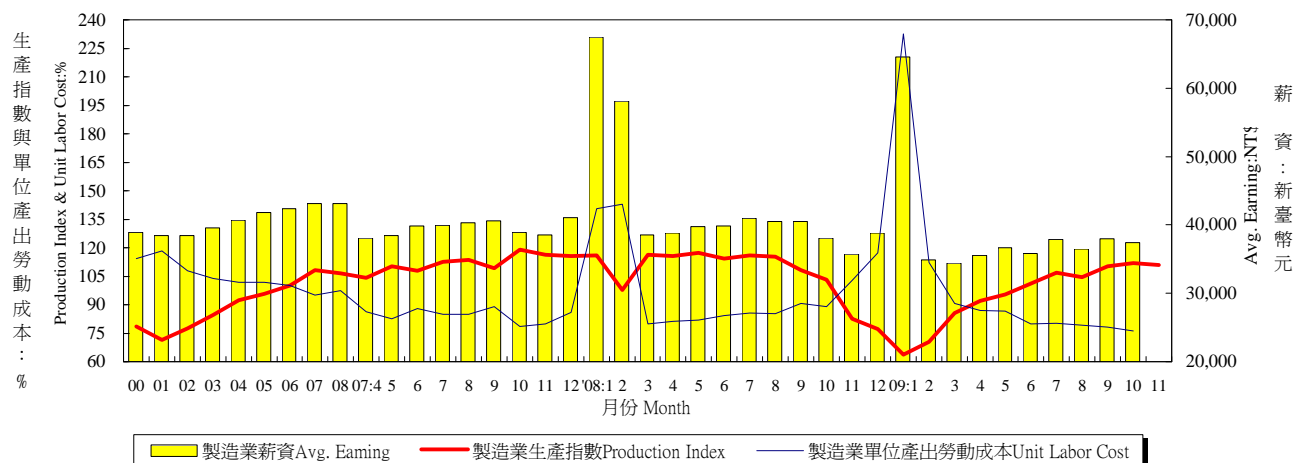
: 2009 12 15

Source: CEF, CIER, Dec. 15, 2009.

* GNP

**

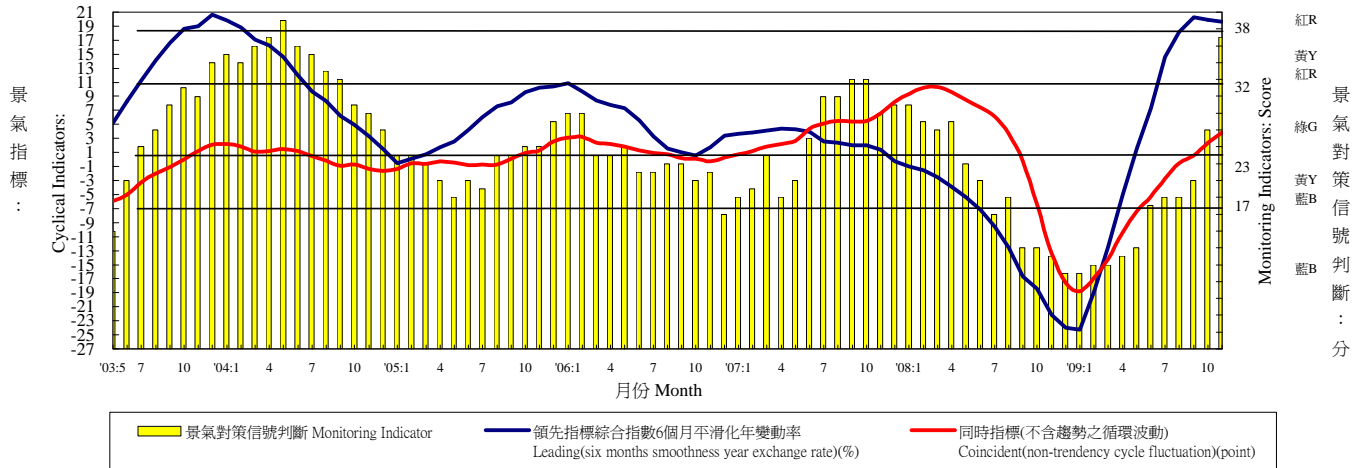
Table 3. Industry Indicators



Year & Month	(95 =100) Mfg. Industrial Production (2006=100)		(95 =100) Heavy Industry Production (2006=100)		(95 =100) Light Industry Production (2006=100)		(95 =100) Unit labor cost in Manufacturing (2006=100)		Average Earnings of Employees in Manufacturing	
	Index ()	Annual Rate of Change ()	Index ()	Annual Rate of Change ()	Index ()	Annual Rate of Change ()	Index ()	Annual Rate of Change ()	() Wages per Month (NT\$)	Annual Rate of Change ()
2000	78.60	7.85	69.68	10.97	117.47	0.57	114.41	-2.36	38,914	3.12
2001	71.51	-9.02	63.55	-8.80	106.19	-9.60	118.44	3.52	38,412	-1.29
2002	77.60	8.52	71.51	12.53	104.26	-1.82	107.78	-9.00	38,435	0.06
2003	84.71	9.16	80.15	12.08	104.82	0.54	103.93	-3.57	39,549	2.90
2004	92.31	8.97	88.99	11.03	107.10	2.18	101.69	-2.16	40,657	2.80
2005	95.69	3.66	93.95	5.57	103.43	-3.43	101.83	0.14	41,858	2.95
2006	100.00	4.50	100.00	6.44	100.00	-3.32	100.00	-1.80	42,393	1.28
2007	108.34	8.34	110.28	10.28	99.67	-0.33	95.06	-4.94	43,169	1.83
2008	106.65	-1.56	109.46	-0.74	94.10	-5.58	97.31	2.61	43,105	-0.22
2008 1	115.85	12.82	117.93	15.32	106.59	1.92	140.51	25.81	67,482	39.39
2008 2	97.79	17.53	102.29	21.12	77.78	0.13	142.85	-33.74	58,072	-23.54
2008 3	116.45	9.42	120.05	12.46	100.42	-4.25	80.01	-6.98	38,546	0.54
2008 4	115.48	9.90	118.98	11.78	99.89	0.93	81.34	-5.81	38,835	2.05
2008 5	117.43	6.38	121.54	8.68	99.12	-4.69	82.02	-0.63	39,711	3.37
2008 6	114.20	6.01	118.58	8.00	94.68	-3.91	84.40	-3.88	39,825	-0.01
2008 7	116.12	3.17	119.80	4.21	99.68	-2.10	85.74	0.99	41,013	2.61
2008 8	115.16	1.27	119.69	3.39	94.94	-9.22	85.23	0.37	40,466	0.37
2008 9	108.37	-0.89	112.51	0.04	89.93	-5.68	90.51	1.56	40,507	-0.22
2008 10	103.05	-13.33	105.15	-13.90	93.70	-10.33	89.00	13.09	38,054	-2.16
2008 11	82.63	-28.92	82.49	-31.06	83.29	-17.61	102.84	28.53	35,751	-7.32
2008 12	77.23	-33.12	74.54	-37.20	89.23	-11.76	117.34	36.51	38,814	-5.53
2009 1	63.79	-44.94	61.97	-47.45	71.88	-32.56	232.53	65.49	64,585	-4.29
2009 2	70.60	-27.80	69.99	-31.58	73.31	-5.75	112.16	-21.48	34,930	-39.85
2009 3	85.55	-26.53	85.54	-28.75	85.59	-14.77	90.81	13.50	34,395	-10.77
2009 4	91.90	-20.42	93.24	-21.63	85.93	-13.98	87.03	7.00	35,512	-8.56
2009 5	95.56	-18.62	98.60	-18.87	82.03	-17.24	86.56	5.54	36,694	-7.60
2009 6	101.08	-11.49	104.30	-12.04	86.71	-8.42	79.94	-5.28	35,836	-10.02
2009 7	106.78	-8.04	110.41	-7.84	90.63	-9.08	80.17	-6.50	37,862	-7.68
2009 8	104.48	-9.27	108.35	-9.47	87.20	-8.15	79.10	-7.19	36,524	-9.74
2009 9	110.16	1.65	114.67	1.92	90.10	0.19	78.36	-13.42	38,015	-6.15
2009 10	111.83	8.52	116.58	10.87	90.67	-3.23	76.23	-14.35	37,399	-1.72
2009 11	111.04	34.38	115.99	40.61	89.00	6.86	--	--	--	--
1-當月	95.71	-12.45	98.15	-12.86	84.82	-10.29	--	--	--	--

Source : Department of Statistics, Ministry of Economic Affairs, "Industrial Production Statistics Monthly, Taiwan Area, ROC".

Table 4. Cyclical Indicators

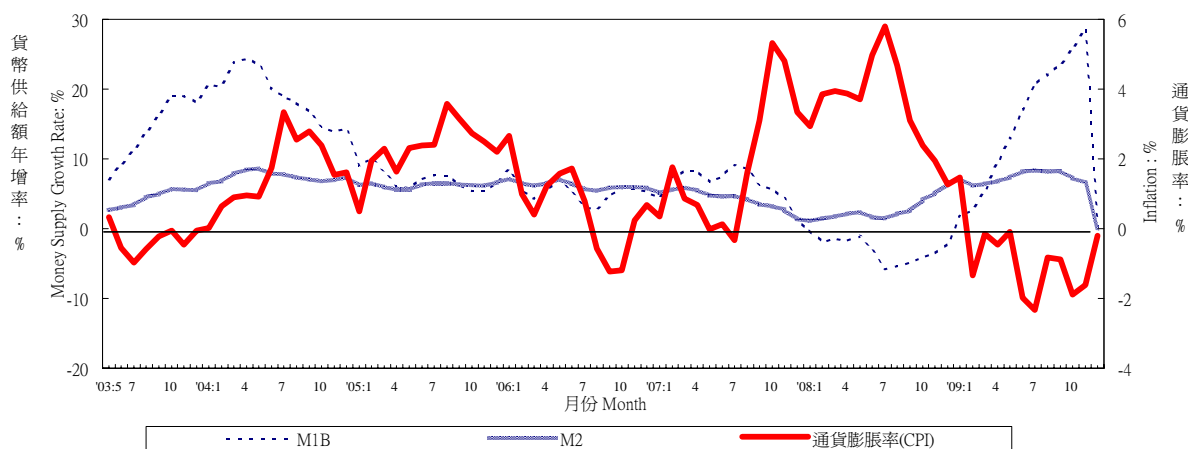


Year & Month	Domestic business indicators		Indicators (Score)	Utility ratio of manufacturing Capacity ()	Ratio of inventor in manufacturing (1996=100)	Un-employment rates ()	
	6 Leading(six months smoothness year exchange rate)(%)	() Coincident(non-trendy cycle fluctuation)(point)					
1996	4.21	-1.2	YB	20	78.25	72.84	2.60
1997	7.52	-0.9	G	27	78.70	67.13	2.72
1998	-2.43	-3.6	YB	20	78.84	71.27	2.69
1999	12.80	-0.4	YB	22	78.91	65.99	2.92
2000	1.68	8.2	G	26	80.35	65.75	2.99
2001	-10.04	-4.1	B	10	76.28	78.44	4.57
2002	11.04	-1.4	G	23	77.02	69.89	5.17
2003	10.86	-2.4	G	23	78.32	65.65	4.99
2004	11.04	0.4	YR	33	80.08	62.59	4.44
2005	5.06	0.0	YB	22	80.13	66.39	4.13
2006	5.11	1.3	YB	22	80.29	63.65	3.91
2007	4.51	4.1	G	25	80.42	62.33	3.91
2008 12	-24.0	-17.6	B	9	-	-	5.03
2009 1	-24.3	-18.8	B	9	-	-	5.31
2	-18.9	-16.9	B	10	-	-	5.75
3	-12.5	-14.2	B	10	-	-	5.81
4	-5.0	-10.4	B	11	-	-	5.76
5	1.6	-7.4	B	12	-	-	5.82
6	7.3	-5.3	YB	17	-	-	5.94
7	14.6	-2.7	YB	18	-	-	6.07
8	18.2	-0.5	YB	18	-	-	6.13
9	20.3	0.6	YB	20	-	-	6.04
10	19.9	2.4	G	26	--	--	5.96
11	19.6	3.8	YR	37	--	--	5.86

Source : Council for Economic Planning & Development, ROC, "Business Indicators of Taiwan."
 Dept. of Statistics, Ministry of Economic Affairs, "Domestic & Foreign Express Report of Economic Statistics Indicators"
 Note : R:Red,overheating; G:Green,stable; B:Blue,recession; YR:between Y & R; YB:between Y & B.

Table 5. Prices and Financial Situation

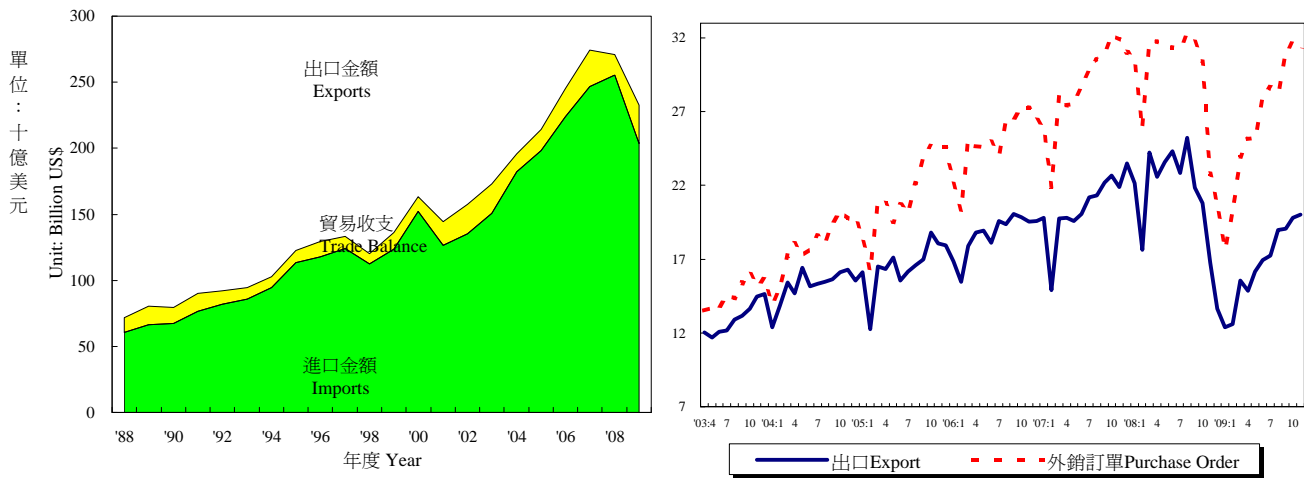
Money Supply Growth Rate and Inflation



Year & Month	(90 =100) Wholesale Prices (2001=100)		(90 =100) Consumer Prices (2001=100)		Money Supply (Annual Growth Rate)		
	Index ()	Annual Rate of Change ()	Index ()	Annual Rate of Change ()	M1A ()	M1B ()	M2 ()
1998	104.30	0.60	98.60	1.69	0.39	2.52	8.76
1999	99.55	-4.55	98.77	0.17	3.09	9.87	8.33
2000	101.36	1.82	100.01	1.26	7.36	10.58	7.04
2001	100.00	-1.34	100.00	-0.01	-4.69	-1.02	5.79
2002	85.78	-14.22	99.80	-0.20	8.59	17.01	3.55
2003	87.91	2.48	95.62	-4.19	11.28	11.82	3.77
2004	94.09	7.03	97.17	1.61	21.10	18.98	7.45
2005	94.67	0.61	99.41	2.31	7.65	7.10	6.22
2006	100.00	5.64	100.00	0.60	5.72	5.30	6.22
2007	106.47	6.47	101.80	1.80	6.80	6.44	4.25
2008	111.95	5.15	105.39	3.53	0.97	-2.94	2.67
2009	102.16	-8.75	104.47	-0.87	--	--	--
2009 1	99.20	-10.85	104.43	1.48	4.84	1.79	7.17
2	100.31	-9.34	102.84	-1.33	3.22	2.71	6.19
3	100.13	-9.32	102.95	-0.15	5.98	5.44	6.39
4	99.50	-11.14	103.74	-0.46	8.91	9.50	6.78
5	99.52	-13.51	104.18	-0.09	10.83	12.95	7.35
6	101.12	-13.70	104.08	-1.98	13.90	17.04	8.15
7	102.35	-13.99	104.28	-2.33	15.67	20.64	8.33
8	104.70	-11.01	106.16	-0.82	17.23	22.14	8.17
9	104.54	-9.47	105.46	-0.88	15.63	23.51	8.28
10	103.94	-6.17	105.88	-1.88	17.98	25.66	7.28
11	105.18	1.06	105.08	-1.61	22.62	28.62	6.59
12	105.38	5.55	104.61	-0.21	--	--	--
1-12	102.16	-8.75	104.47	-0.87	--	--	--

Source : Economic Research Department, The Central Bank of China. Financial Statistics Monthly, Taiwan District ROC.

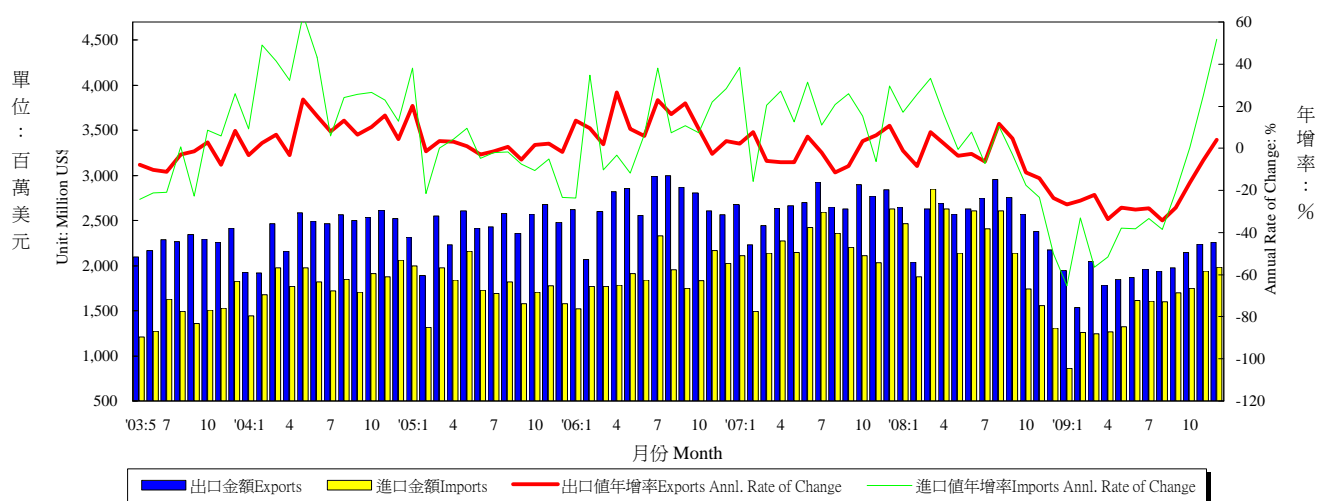
Table 6. Foreign Trade Values



Year & Month	Export & Import Values of Foreign Trade					Purchase Order for Exports	
	() Amount (Mil. US\$)	Annual Rate of Change ()	() Amount (Mil. US\$)	Annual Rate of Change ()	() Trade Balance	() Amount (Mil. US\$)	Annual Rate of Change ()
1998	112,595	-9.32	105,230	-8.46	7,366	118,843	-4.00
1999	123,733	9.89	111,196	5.67	12,537	127,474	7.26
2000	151,950	22.80	140,732	26.56	11,218	153,424	20.36
2001	126,314	-16.87	107,971	-23.28	18,344	135,714	-11.54
2002	135,317	7.13	113,245	4.89	22,072	150,952	11.23
2003	150,600	11.29	128,010	13.04	22,590	170,028	12.64
2004	182,370	21.10	168,758	31.83	13,613	215,087	26.50
2005	198,432	8.81	182,614	8.21	15,817	256,393	19.20
2006	224,017	12.89	202,698	11.00	21,319	299,313	16.74
2007	246,677	10.12	219,252	8.17	27,425	345,814	15.54
2008	255,629	3.63	240,448	9.67	15,181	351,723	1.71
2009	203,671	-20.33	174,660	-27.36	29,011	--	#VALUE!
2009 1	12,370	-44.11	8,966	-56.47	3,404	17,676	-41.67
2	12,588	-28.58	10,921	-31.59	1,668	20,117	-22.27
3	15,563	-35.79	12,166	-49.54	3,397	23,937	-24.29
4	14,843	-34.28	12,712	-41.14	2,131	25,128	-20.90
5	16,170	-31.46	13,011	-39.11	3,158	25,166	-20.14
6	16,946	-30.38	15,196	-33.44	1,750	27,939	-10.91
7	17,264	-24.48	15,250	-34.11	2,014	28,614	-8.77
8	18,998	-24.64	17,045	-32.29	1,954	28,287	-11.96
9	19,066	-12.72	16,520	-21.09	2,546	30,837	-3.00
10	19,817	-4.72	16,585	-6.70	3,232	31,754	4.41
11	20,016	19.35	17,904	17.95	2,112	31,260	37.11
12	20,030	46.92	18,384	56.20	1,647	--	--
1-12	203,671	-20.33	174,660	-27.36	29,011	--	--

Source : Department of Statistics, Ministry of Finance, "Primary Statistics of Export & Import"

Table 7. Trade with the United States



Year & Month	Exports			Imports			Trade Balance	Total Trade Amount	
	(Amount (Mil. US\$)	Annual rate of change (%)	Export share (%)	(Amount (Mil. US\$)	Annual rate of change (%)	Export share (%)	(Amount (Mil. US\$)	(Amount (Mil. US\$)	Annual rate of change (%)
1998	29,959	1.38	26.61	19,845	-14.59	18.86	10,114	49,804	-5.65
1999	31,339	4.61	25.33	19,818	-0.14	17.82	11,521	50,595	1.59
2000	35,588	13.56	23.42	25,270	27.51	17.96	10,319	59,941	18.47
2001	28,136	-20.94	22.27	18,407	-27.16	17.05	9,728	45,884	-23.45
2002	27,365	-2.74	20.22	18,256	-0.82	16.12	9,110	45,621	-0.57
2003	26,554	-2.97	17.63	16,995	-6.90	13.28	9,558	43,549	-4.54
2004	28,751	8.27	15.77	21,780	28.16	12.91	6,971	50,531	16.03
2005	29,114	1.26	14.67	21,171	-2.80	11.59	7,943	50,285	-0.49
2006	32,361	11.15	14.45	22,664	7.06	11.18	9,696	55,025	9.43
2007	32,077	-0.88	13.00	26,508	16.96	12.09	5,569	58,585	6.47
2008	30,791	-4.01	12.05	26,327	-0.68	10.95	4,464	57,118	-2.51
2009	23,557	-23.49	11.57	18,155	-31.04	10.39	5,402	41,712	-26.97
2009 1	1,948	-26.53	15.75	860	-65.17	9.59	1,089	2,808	-45.16
2009 2	1,536	-24.68	12.20	1,259	-32.94	11.53	277	2,796	-28.64
2009 3	2,046	-22.16	13.15	1,243	-56.36	10.22	803	3,290	-39.95
2009 4	1,783	-33.74	12.01	1,269	-51.73	9.99	514	3,052	-42.64
2009 5	1,848	-28.05	11.43	1,324	-38.02	10.18	524	3,172	-32.58
2009 6	1,867	-29.04	11.02	1,613	-38.17	10.62	253	3,480	-33.59
2009 7	1,963	-28.59	11.37	1,607	-33.20	10.54	356	3,570	-30.74
2009 8	1,940	-34.39	10.21	1,602	-38.56	9.40	338	3,543	-36.35
2009 9	1,978	-28.18	10.37	1,698	-20.53	10.28	279	3,676	-24.83
2009 10	2,147	-16.45	10.83	1,750	0.48	10.55	397	3,896	-9.62
2009 11	2,240	-5.77	11.19	1,942	24.89	10.85	298	4,183	6.36
2009 12	2,261	3.99	11.29	1,986	51.81	10.80	275	4,247	21.95
2009 1-12	23,557	-23.49	11.74	18,155	-31.04	10.38	5,402	41,712	-26.97

Source : Dept. of Statistics, Ministry of Finance, "Preliminary Statistics of Export & Import."