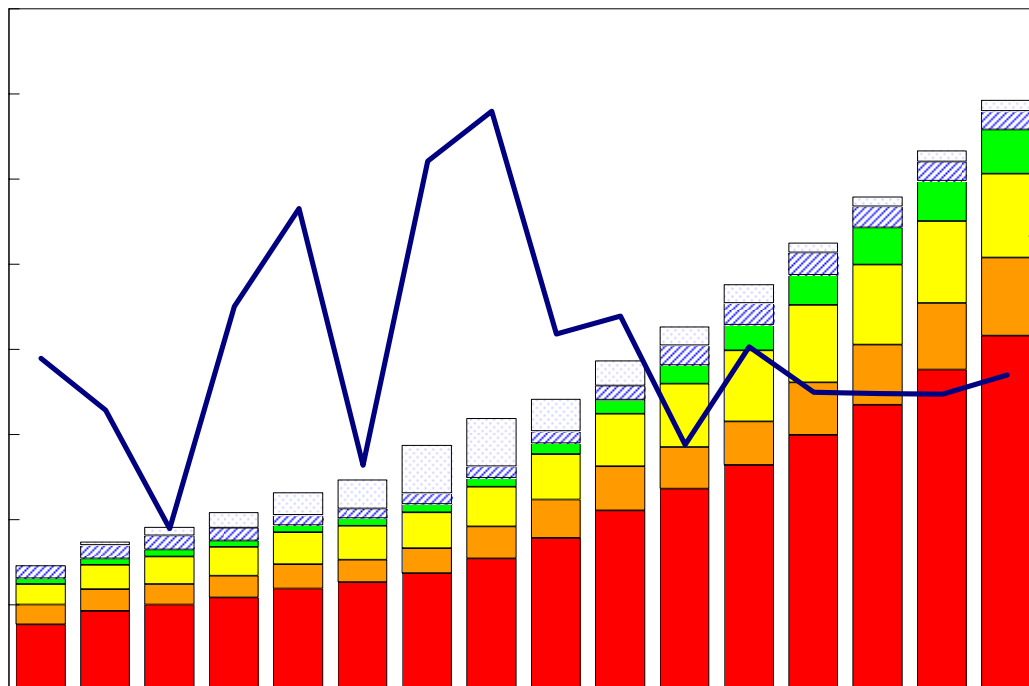


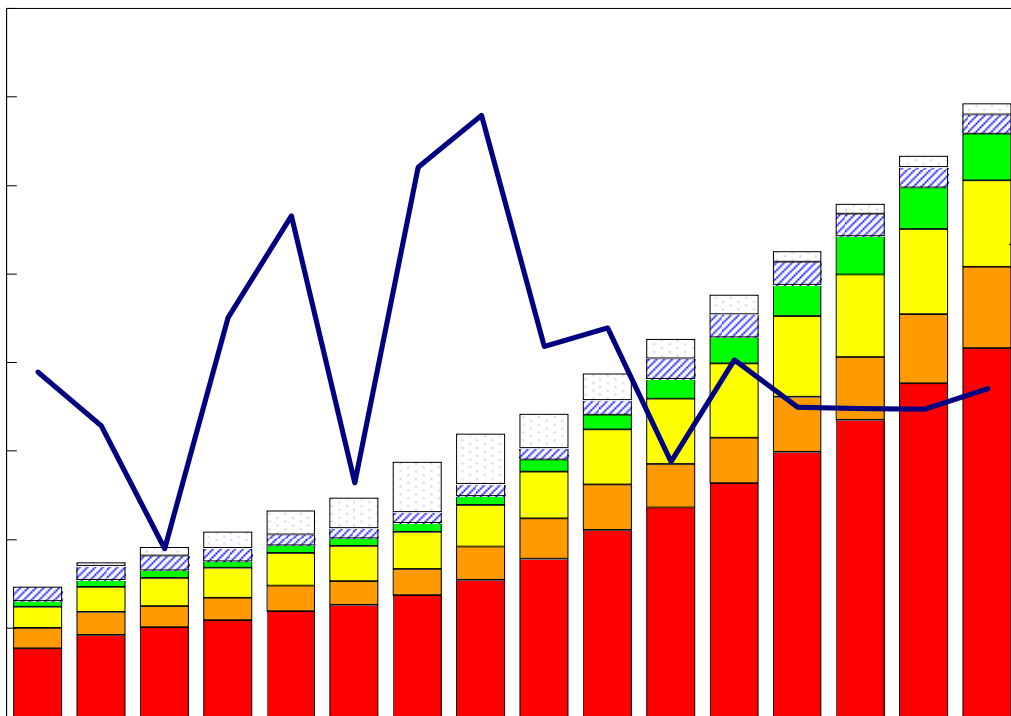
# Major Economic Indicators for Taiwan



Chung-Hua Institution for Economic Research  
December 2008

# 臺灣重要經濟變動指標

## Major Economic Indicators for Taiwan



經濟展望中心 編製

The Center for Economic Forecasting

# 目次

# Index

臺灣經濟預測.....I	Taiwan's Macroeconomic Forecasts.....I
表一：主要總體經濟指標.....2-3	Table 1 : GDP Components by Expenditure.....2-3
表二：各業產值概況.....4-5	Table 2 : GDP Components by Industry.....4-5
表三：生產概況.....6	Table 3 : Industry Indicators.....6
表四：景氣概況.....7	Table 4 : Cyclical Indicators.....7
表五：物價與金融概況.....8-9	Table 5 : Prices and Financial Situation.....8-9
表六：臺灣進出口貿易.....10	Table 6 : Foreign Trade Values.....10
表七：臺灣對美國之進出口狀況.....11	Table 7 : Trade with the United States .....11
表八：臺灣對日本之進出口狀況.....12	Table 8 : Trade with Japan.....12
表九：臺灣對德國之進出口狀況.....13	Table 9 : Trade with Germany.....13
表十：臺灣對香港之進出口狀況.....14	Table 10 : Trade with Hong Kong .....14
表十一：兩岸經貿.....15	Table 11 : Trade across the Taiwan Straits.....15

## Taiwan's Macroeconomic Forecasts

	2008	20089 Year 2008 Quarterly				2007	2008	2009
	4	1	2	3	4	Annually		
	Q4	Q1	Q2	Q3	Q4	2007(r)	2008(f)	2009(f)
<b>GDP, GNP, (2001), GDP, GNP and Major Components, Billions of 2001 NT Dollars</b>								
GDP, Real GDP	3355.68	3256.39	3240.59	3466.39	3503.72	13082.18	13302.30	13467.09
, yoy( )	-2.46	-2.31	-1.24	4.03	4.41	5.70	1.68	1.24
GNP, Real GNP	3433.47	3380.46	3315.83	3521.80	3579.93	13397.58	13625.07	13798.01
, yoy( )	-2.17	-2.94	-0.39	4.20	4.27	5.69	1.70	1.27
GNP, per capita GNP	4252.89	4267.78	4038.94	4333.92	4481.59	17310.63	17782.00	17122.23
, yoy( )	-6.86	-9.28	-7.63	-2.66	5.38	4.72	2.72	-3.71
, Private Consumption	1701.89	1899.46	1674.79	1859.16	1750.36	7147.60	7131.47	7183.77
, yoy( )	-1.58	-1.78	0.30	1.83	2.85	2.31	-0.23	0.73
, Total Fixed Investment	627.16	481.07	560.70	610.60	688.82	2439.75	2300.25	2341.18
, yoy( )	-5.75	-6.90	-3.70	6.36	9.83	1.90	-5.72	1.78
, Private Fixed Investment	436.27	368.91	427.82	461.83	477.89	1922.78	1774.56	1736.46
, yoy( )	-10.93	-11.61	-8.99	2.43	9.54	3.25	-7.71	-2.15
, Exports, gds+serv	2261.19	2094.82	2334.62	2402.74	2329.81	8951.87	9258.35	9162.00
, yoy( )	-6.35	-8.54	-3.19	4.69	3.03	8.82	3.42	-1.04
, Imports, gds+serv	1676.07	1553.07	1698.77	1814.76	1726.79	6959.95	6948.66	6793.39
, yoy( )	-6.83	-10.71	-2.64	1.47	3.03	3.79	-0.16	-2.23
<b>, Other Macroeconomic Variables</b>								
(fob, ), Merchandise Export(fob, US \$bn)	622.60	561.88	622.43	680.16	653.02	2466.77	2666.98	2517.49
, yoy( )	-8.49	-12.20	-11.74	-2.72	4.89	10.12	8.12	-5.61
(cif, ), Merchandise Import (cif, US \$bn)	535.63	506.09	559.37	668.62	562.27	2192.52	2495.49	2296.35
, yoy( )	-7.73	-16.62	-15.00	-3.77	4.97	8.17	13.82	-7.98
GDP, GDP Deflator (2001=100)	93.86	95.15	92.11	93.13	94.41	96.58	94.01	93.70
, yoy( )	-2.40	-1.87	0.84	-0.80	0.58	0.33	-2.66	-0.33
, Wholesale Price Index (2006=100)	109.78	108.15	109.66	109.70	113.06	106.47	113.17	110.14
, yoy( )	-0.20	-2.37	-4.42	-6.54	2.99	6.47	6.29	-2.67
, Consumer Price Index (2006=100)	106.75	102.56	103.47	103.61	108.14	101.80	105.45	104.45
, yoy( )	2.09	-0.82	-1.35	-2.93	1.30	1.80	3.58	-0.95
M2 ( ), Money Stock (M2)	26744.15	26417.44	26346.66	26499.56	27852.09	26122.73	26662.70	26778.94
, yoy( )	2.77	-0.33	-1.52	-0.56	4.14	4.25	2.07	0.44
( / ), Exchange Rate(NT\$/US\$)	33.19	33.01	33.03	33.01	32.89	32.84	31.59	32.98
, yoy( )	-2.33	-4.70	-8.49	-5.82	0.89	-0.95	3.82	-4.42
31-90, 31-90 day Commercial Paper Rate	1.86	1.81	1.95	1.90	2.04	1.90	2.00	1.93
, yoy( )	-8.37	-11.22	-4.41	-7.23	9.90	23.92	4.90	-3.53
(%), Unemployment Rate(%)	4.34	4.24	4.32	4.62	4.22	3.91	4.06	4.35

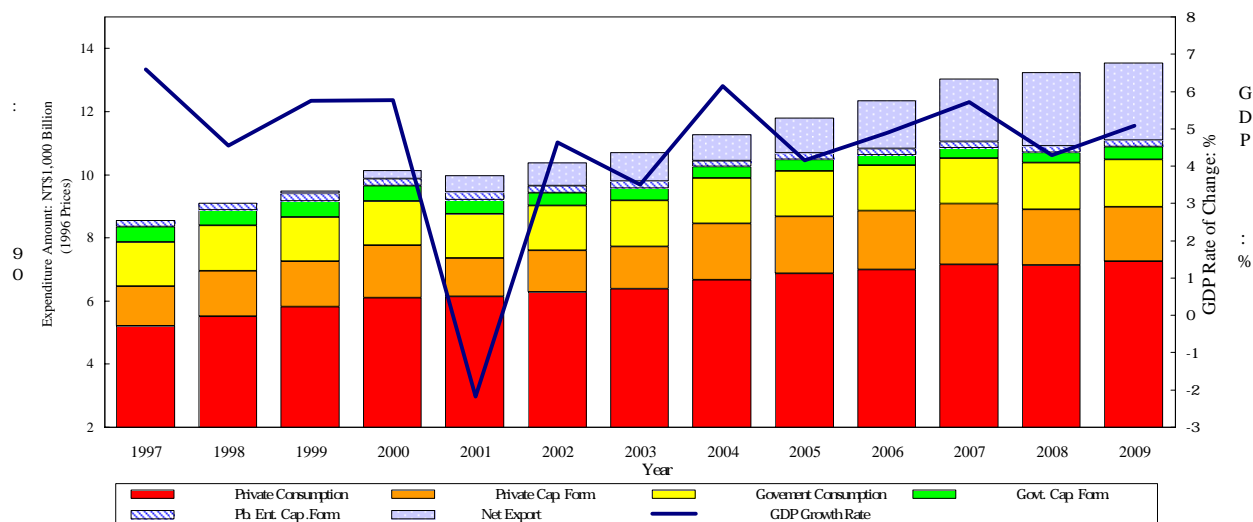
2008 12 4

Source: CEF, CIER, Dec. 4, 2008.

# Table 1. GDP Components by Expenditure

## GDP

### Real GDP Expenditure & Growth Rate

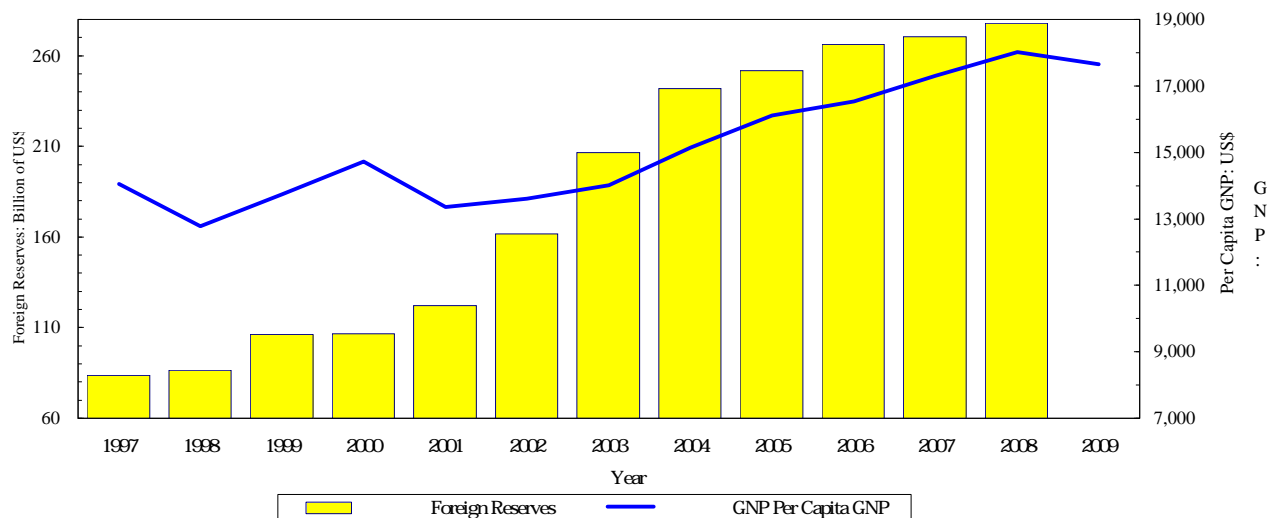


Year & Quarter	GDP Economic Growth Rate (%)	GDP (Bil. NTS)	Private Consumption Expenditure		Private Spe. Gross Fixed Cap. Formation		Exports of Goods and Services		Imports of Goods and Services		Government Consumption Expenditure	
			GDP /GDP (%)	Annual Rate of Change (%)	GDP /GDP (%)	Annual Rate of Change (%)	GDP /GDP (%)	Annual Rate of Change (%)	GDP /GDP (%)	Annual Rate of Change (%)	GDP /GDP (%)	Annual Rate of Change (%)
1997	6.59	8,610	58.60	7.08	14.61	18.61	47.46	9.23	45.41	13.62	15.28	5.98
1998	4.55	9,238	58.85	6.19	15.84	13.24	47.19	2.77	46.16	6.72	15.16	3.65
1999	5.75	9,641	59.71	5.51	15.20	1.01	47.32	11.71	44.81	4.53	14.13	-4.33
2000	5.77	10,032	60.68	4.59	16.65	15.61	53.75	18.86	51.56	15.04	13.87	0.71
2001	-2.17	9,862	62.15	0.67	12.36	-26.83	50.32	-7.76	45.07	-13.02	14.24	0.53
2002	4.64	10,293	61.06	2.60	12.48	6.68	52.89	10.63	45.80	7.13	13.90	2.06
2003	3.50	10,520	60.39	1.48	12.70	3.65	57.03	10.38	49.69	8.08	13.87	0.57
2004	6.15	11,066	60.72	4.46	16.51	33.05	63.06	14.40	59.68	18.88	13.24	-0.54
2005	4.16	11,455	61.31	2.99	15.86	0.31	64.24	7.62	60.01	3.77	13.08	1.08
2006	4.89	11,918	60.23	1.76	16.22	3.57	69.68	10.26	64.04	5.62	12.63	-0.42
2007	5.72	12,636	58.90	2.31	16.26	3.25	73.48	8.82	65.99	3.79	12.10	0.92
2008	4.30	12,661	60.10	-0.30	15.57	-7.83	75.93	3.60	70.22	-0.39	12.35	1.35
2009	5.08	13,060	59.48	1.86	14.47	-2.87	69.52	-3.64	62.25	-6.43	12.21	2.04
2007 4	6.35	3,308	55.68	1.65	15.64	-1.21	75.96	12.92	66.36	5.82	12.17	1.08
2008 1	6.25	3,232	63.09	2.07	14.96	3.92	71.87	12.71	67.45	9.59	12.76	1.28
2008 2	4.56	2,997	59.04	0.52	17.62	-9.92	81.71	9.86	75.36	0.19	11.66	-0.17
2008 3	-1.02	3,128	62.91	-1.97	15.72	-11.51	79.83	-0.65	77.83	-2.39	12.29	1.31
2008 4	-1.73	3,303	55.50	-1.86	14.16	-11.40	70.97	-5.68	61.05	-7.73	12.63	2.76
2009 1	-0.31	3,269	63.30	0.73	13.33	-8.68	63.68	-8.45	58.21	-10.93	12.74	0.78
2009 2	1.05	3,086	58.51	1.68	16.17	-4.23	72.30	-6.05	64.42	-8.27	11.53	2.11
2009 3	3.79	3,315	60.62	2.43	14.23	-2.57	71.12	-1.79	64.31	-7.04	11.82	1.75
2009 4	3.90	3,391	55.58	2.70	14.26	3.86	71.07	1.90	62.17	0.85	12.69	3.20

## GDP

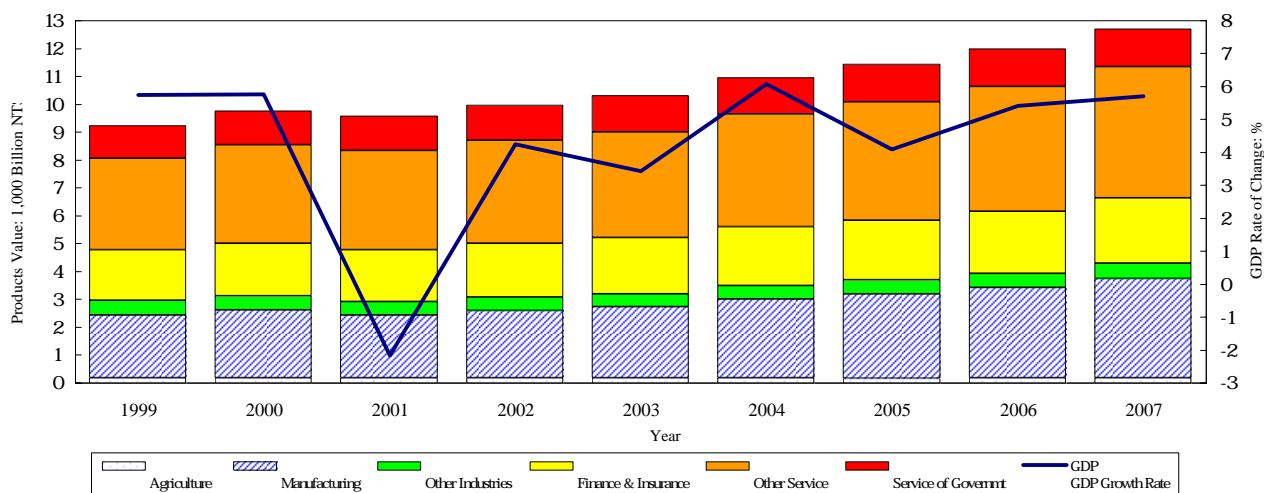
Source: DGBAS, Executive Yuan, "Quarterly National Economic Trends, Taiwan Area, ROC The Central Bank of China, Financial Statistics, Taiwan District, The Republic of China"

## GNP Total Foreign Reserves & Per Capita GNP



Year & Quarter	Public Enter. Gross Fixed Capita Formation		Government Gross Fixed Capita Formation		Increase in Stocks		Net Factor Income From Abroad		GNP ( ) Per Capita GNP (US\$)	( ) Total Foreign Reserves (Billion of US\$)
	GDP /GDP (%)	Annual Rate of Change (%)	GDP /GDP (%)	Annual Rate of Change (%)	GDP /GDP (%)	( ) (1996 NT Mil (1996=100))	GDP /GDP (%)	Annual Rate of Change (%)		
1997	2.37	-2.48	5.73	-0.29	1.36	115,254	1.04	-19.04	14,048	83.5
1998	2.40	4.49	5.42	-0.29	1.30	118,911	0.74	-24.87	12,773	86.6
1999	2.56	13.33	5.36	4.10	0.52	51,674	0.94	31.72	13,737	106.2
2000	2.33	-2.96	4.88	-4.05	-0.60	-58,262	1.39	52.36	14,721	106.7
2001	2.38	1.43	4.63	-6.42	-1.00	-98,959	1.95	37.74	13,348	122.2
2002	2.20	-1.23	3.88	-12.71	-0.61	-60,948	2.36	26.52	13,604	161.7
2003	2.08	-3.94	3.83	-1.26	-0.21	-19,224	3.13	35.95	14,012	206.6
2004	1.64	-18.15	3.72	-5.78	0.78	78,446	3.36	11.48	15,156	241.7
2005	1.79	16.20	3.63	-1.92	0.09	9,286	2.54	-23.32	16,113	251.8
2006	1.60	-7.86	3.43	-7.39	0.26	32,161	2.62	6.29	16,532	266.1
2007	1.58	1.42	3.27	-5.28	0.39	46,409	2.63	5.11	17,299	270.3
2008	1.67	1.92	3.68	1.54	0.91	84,729	2.77	2.34	18,020	277.8
2009	1.67	3.01	4.25	22.52	0.64	67,294	2.77	2.53	17,651	--
2007 4	2.14	-1.78	4.10	2.09	0.68	23,775	2.28	-6.63	4,563	270.3
2008 1	1.43	6.53	2.66	0.08	0.67	13,859	4.99	19.52	4,705	286.9
2008 2	1.42	4.70	3.54	-1.01	0.36	7,528	1.67	-47.83	4,372	291.4
2008 3	1.46	-9.94	3.72	-6.44	1.90	39,394	1.69	61.38	4,452	281.1
2008 4	2.33	5.78	4.78	10.64	0.69	23,948	2.62	12.08	4,491	280.7
2009 1	1.45	2.04	3.05	20.92	0.66	14,022	4.14	-17.13	4,483	--
2009 2	1.44	3.80	4.17	26.84	0.31	7,024	2.58	58.18	4,165	--
2009 3	1.43	3.71	4.42	29.82	0.68	15,655	1.84	16.16	4,438	--
2009 4	2.33	2.72	5.33	15.57	0.90	30,593	2.51	-2.03	4,565	--

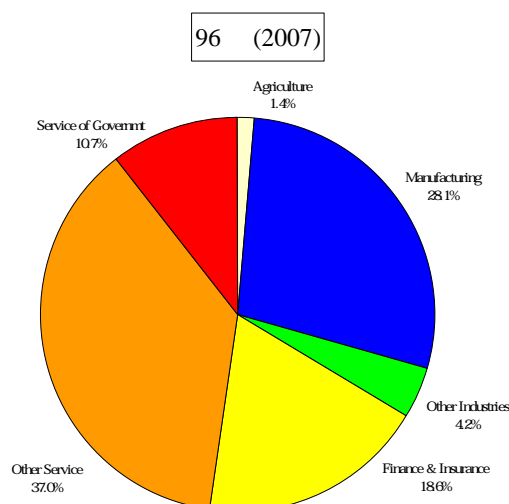
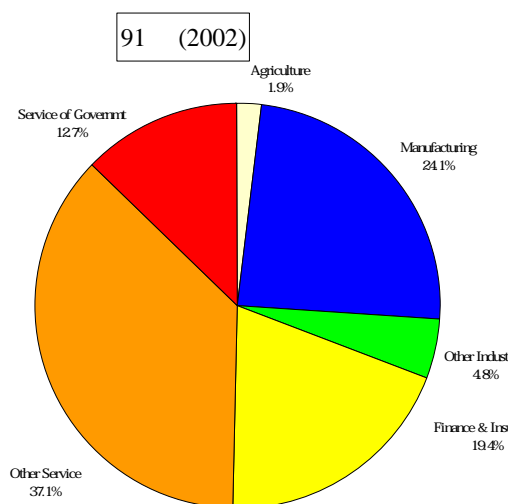
Table 2. GDP Components by Industry  
GDP  
GDP Products Value & Growth Rate



Year & Quarter	GDP ( ) 90 GDP (Bil. NT\$)	GDP Rate of Change ( )	Sector												
			Agriculture Hunting Forestry & Fishing		Sub Total		Mining & Quarring		Manufacturing		Construction		Electricity, Gas & Water		
			GDP /GDP ( )	Annual Rate of Change ( )	GDP /GDP ( )	Annual Rate of Change ( )	GDP /GDP ( )	Annual Rate of Change ( )	GDP /GDP ( )	Annual Rate of Change ( )	GDP /GDP ( )	Annual Rate of Change ( )	GDP /GDP ( )	Annual Rate of Change ( )	
1999	9,531	5.75	1.93	2.73	29.21	5.38	0.45	-7.85	23.67	7.36	3.17	-5.07	1.92	4.09	
2000	10,081	5.77	1.85	1.21	29.22	5.77	0.40	-6.52	24.02	7.33	2.86	-4.56	1.94	6.50	
2001	9,862	-2.17	1.85	-1.95	27.62	-7.51	0.37	-10.24	22.73	-7.44	2.55	-12.58	1.97	-0.35	
2002	10,281	4.25	1.86	4.74	28.05	5.88	0.36	1.46	23.41	7.38	2.37	-3.41	1.92	1.40	
2003	10,634	3.43	1.80	-0.06	28.14	3.77	0.28	-19.14	23.80	5.15	2.16	-5.58	1.91	2.72	
2004	11,279	6.07	1.63	-4.09	29.36	10.64	0.26	-2.80	25.01	11.49	2.22	8.98	1.87	3.91	
2005	11,740	4.09	1.44	-8.07	29.99	6.34	0.24	-4.54	25.70	6.96	2.16	1.20	1.90	5.71	
2006	12,376	5.42	1.45	6.08	30.37	6.76	0.20	-10.79	26.14	7.20	2.18	6.68	1.85	3.03	
2007	13,082	5.70	1.34	-1.90	31.41	9.31	0.20	7.92	27.29	10.36	2.13	3.15	1.79	1.88	
2006 4	3,235	3.91	1.65	12.67	30.40	3.01	0.20	-14.04	26.15	2.80	2.20	7.97	1.86	2.61	
2007 1	3,137	3.84	1.34	3.33	29.52	4.23	0.20	-11.32	25.46	4.51	2.14	4.22	1.72	2.22	
2007 2	3,138	5.49	1.59	10.80	30.31	8.62	0.22	26.73	26.14	9.08	2.25	5.90	1.70	3.55	
2007 3	3,367	7.02	1.17	-1.49	33.29	10.80	0.19	8.83	29.07	12.12	2.06	2.13	1.98	2.37	
2007 4	3,440	6.35	1.29	-16.89	32.30	12.98	0.21	12.42	28.27	14.98	2.08	0.58	1.74	-0.40	
2008 1	3,333	6.25	1.20	-4.61	30.89	11.19	0.21	11.82	26.90	12.24	2.08	3.36	1.70	5.24	
2008 2	3,281	4.56	1.43	-5.78	31.39	8.26	0.19	-9.41	27.32	9.29	2.19	1.44	1.69	3.76	
2008 3	3,332	-1.02	1.20	1.80	33.49	-0.44	0.16	-16.64	29.38	0.03	2.05	-1.27	1.90	-4.95	

Source DGBAS, Executive Yuan, "Quarterly National Economic Trends, Taiwan Area, ROC".

Note Import duties, Value added taxes and imputed bank services charge, are not shown in the table.

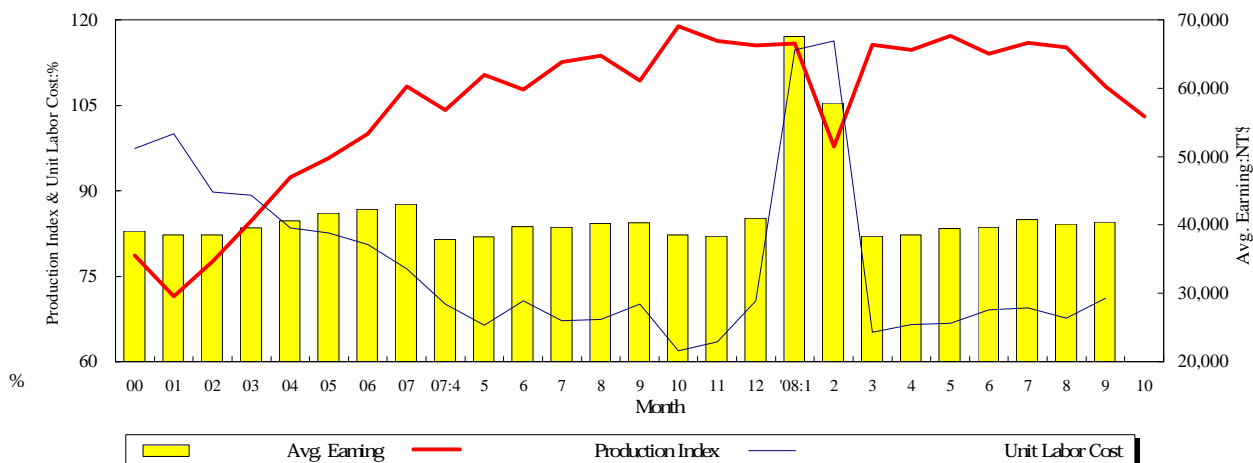


GDP

Note: Import duties, Value added taxes and imputed bank services charge are not included; therefore the percentage is different from the table.

Year & Quarter	Sector																		
	Services															Producers of Government Services	Producers of Private NonProfit Services to Households	Domestic Services of Households	
	Sub-Total		Transportation Storage & Communication		Wholesale & Retail Trade Rest. & Hotel		Finance Insurance Real Estate		Other Services		GDP /GDP ( )	Annual Rate of Change ( )	GDP /GDP ( )	Annual Rate of Change ( )	GDP /GDP ( )				Annual Rate of Change ( )
	GDP /GDP ( )	Annual Rate of Change ( )	GDP /GDP ( )	Annual Rate of Change ( )	GDP /GDP ( )	Annual Rate of Change ( )	GDP /GDP ( )	Annual Rate of Change ( )	GDP /GDP ( )	Annual Rate of Change ( )									
1999	53.54	7.00	5.85	18.06	18.25	6.85	18.94	3.92	10.13	10.45	11.10	3.09	0.36	-24.99	0.71	5.24			
2000	53.78	6.25	6.17	11.50	18.43	6.85	18.54	3.52	10.45	9.10	10.87	3.56	0.40	14.99	0.71	5.31			
2001	55.07	0.17	6.45	2.29	18.28	-2.99	18.97	0.10	11.36	6.37	11.38	2.47	0.42	4.25	0.75	3.63			
2002	54.73	3.60	6.53	5.49	18.09	3.15	18.78	3.17	11.40	4.52	11.15	2.15	0.44	8.31	0.74	3.09			
2003	54.73	3.44	6.56	3.95	17.90	2.38	19.01	4.70	11.33	2.87	11.13	3.24	0.39	-8.54	0.72	1.08			
2004	54.51	5.64	6.65	7.48	18.13	7.42	18.68	4.25	11.22	5.01	10.64	1.35	0.38	4.50	0.70	3.18			
2005	54.52	4.12	6.65	4.18	18.61	6.83	18.30	1.98	11.31	4.93	10.32	1.01	0.39	5.27	0.72	6.37			
2006	54.15	4.69	6.55	3.74	18.74	6.19	17.92	3.21	11.48	6.97	9.86	0.70	0.37	2.10	0.74	7.85			
2007	53.95	5.33	6.33	2.16	18.63	5.07	18.07	6.58	11.59	6.73	9.27	-0.61	0.35	-1.50	0.73	4.88			
2006 4	54.21	5.22	6.18	3.15	19.83	5.79	17.34	4.31	11.36	2.84	9.57	1.22	0.37	-11.06	0.68	5.05			
2007 1	55.93	4.66	7.01	1.36	19.21	4.68	18.35	4.84	11.93	2.54	9.30	0.32	0.35	4.02	0.79	4.85			
2	54.44	5.07	6.48	2.51	18.28	4.60	18.83	5.79	11.57	0.38	9.57	0.09	0.35	-13.00	0.77	5.01			
3	52.00	6.41	5.93	2.31	17.38	5.56	17.80	9.06	11.63	0.28	9.55	0.48	0.35	4.03	0.70	4.92			
4	53.62	5.19	5.96	2.54	19.66	5.41	17.39	6.62	11.25	-0.59	8.70	-3.29	0.35	0.42	0.67	4.75			
2008 1	55.20	4.88	6.81	3.24	19.24	6.43	17.99	4.18	11.87	-0.52	8.75	-0.01	0.43	28.99	0.78	4.65			
2	53.94	3.60	6.33	2.11	18.48	5.70	18.29	1.59	11.79	-1.99	9.19	0.35	0.34	1.60	0.77	3.97			
3	51.58	-1.82	5.93	-1.03	17.15	-2.36	17.25	-4.08	12.18	-4.20	9.74	1.01	0.36	1.34	0.72	2.98			

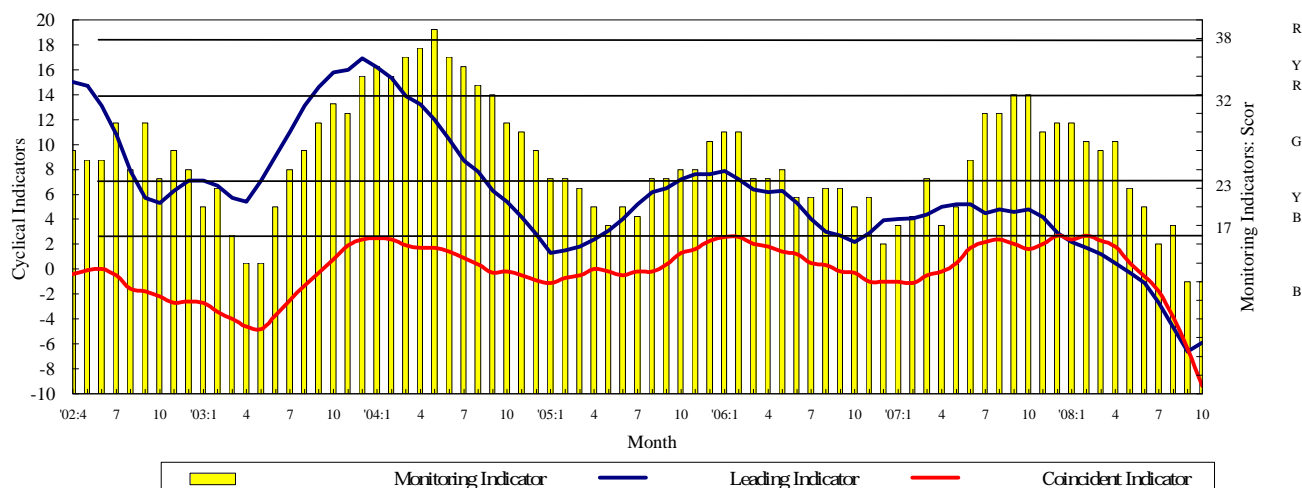
### Table 3. Industry Indicators



Year & Month	( 95 =100) Mfg. Industrial Production (2006=100)		( 95 =100) Heavy Industry Production (2006=100)		( 95 =100) Light Industry Production (2006=100)		( 90 =100) Unit labor cost in Manufacturing (2001=100)		Average Earnings of Employees in Manufacturing	
	Index ( )	Annual Rate of Change ( )	Index ( )	Annual Rate of Change ( )	Index ( )	Annual Rate of Change ( )	Index ( )	Annual Rate of Change ( )	( ) Wages per Month (NT\$)	Annual Rate of Change ( )
2000	78.60	7.85	69.68	10.97	117.47	0.57	97.38	-2.63	39,080	3.16
2001	71.51	-9.02	63.55	-8.80	106.19	-9.60	100.00	2.69	38,586	-1.26
2002	77.60	8.52	71.51	12.53	104.26	-1.82	89.72	-10.28	38,565	-0.05
2003	84.71	9.16	80.15	12.08	104.82	0.54	87.17	-2.84	39,583	2.64
2004	92.31	8.97	88.99	11.03	107.10	2.18	83.46	-4.26	40,611	2.60
2005	95.69	3.66	93.95	5.57	103.43	-3.43	82.53	-1.11	41,751	2.81
2006	100.00	4.50	100.00	6.44	100.00	-3.32	80.57	-2.37	42,293	1.30
2007	108.34	8.34	110.28	10.28	99.67	-0.33	76.24	-5.37	43,026	1.73
2007 4	104.18	3.99	105.46	5.09	98.49	-0.94	70.06	-3.02	37,917	0.12
2007 5	110.39	6.88	111.83	7.98	104.00	1.99	66.37	-7.47	38,258	-1.77
2007 6	107.73	6.67	109.80	8.71	98.53	-2.41	70.71	-2.59	39,759	3.78
2007 7	112.55	12.46	114.96	14.90	101.82	1.60	67.19	-11.82	39,663	0.31
2007 8	113.72	10.22	115.77	12.38	104.58	0.66	67.41	-3.93	40,236	6.22
2007 9	109.34	8.25	112.47	10.95	95.35	-4.06	70.12	-5.26	40,359	3.21
2007 10	118.90	17.58	122.13	20.34	104.49	5.05	61.93	-13.54	38,581	0.00
2007 11	116.25	14.88	119.65	18.04	101.09	0.64	63.44	-7.96	38,363	2.65
2007 12	115.47	15.77	118.69	19.49	101.12	-0.41	70.70	-9.23	40,994	0.19
2008 1	115.80	12.82	117.90	15.32	106.45	1.92	114.76	27.28	67,597	40.40
2008 2	97.75	17.53	102.27	21.12	77.63	0.13	116.27	-33.47	57,819	-24.21
2008 3	115.66	9.42	119.15	12.46	100.14	-4.25	65.13	-6.42	38,328	0.47
2008 4	114.76	9.90	118.14	11.78	99.74	0.93	66.52	-5.05	38,556	1.69
2008 5	117.20	6.17	121.29	8.46	98.98	-4.83	66.79	0.63	39,483	3.20
2008 6	114.09	5.90	118.50	7.92	94.44	-4.15	69.07	-2.32	39,676	-0.21
2008 7	115.97	3.04	119.67	4.10	99.50	-2.28	69.44	3.35	40,751	2.74
2008 8	115.14	1.25	119.64	3.34	95.08	-9.08	67.69	0.42	40,152	-0.21
2008 9	108.33	-0.92	112.46	-0.01	89.93	-5.68	74.14	1.45	40,453	0.23
2008 10	103.06	-13.32	104.98	-14.04	94.50	-9.56	--	--	--	--
2008 11	111.78	4.63	115.40	6.35	95.64	-3.77	77.90	-2.98	44,746	1.05

Source Department of Statistics, Ministry of Economic Affairs, "Industrial Production Statistics Monthly, Taiwan Area, ROC".

Table 4. Cyclical Indicators



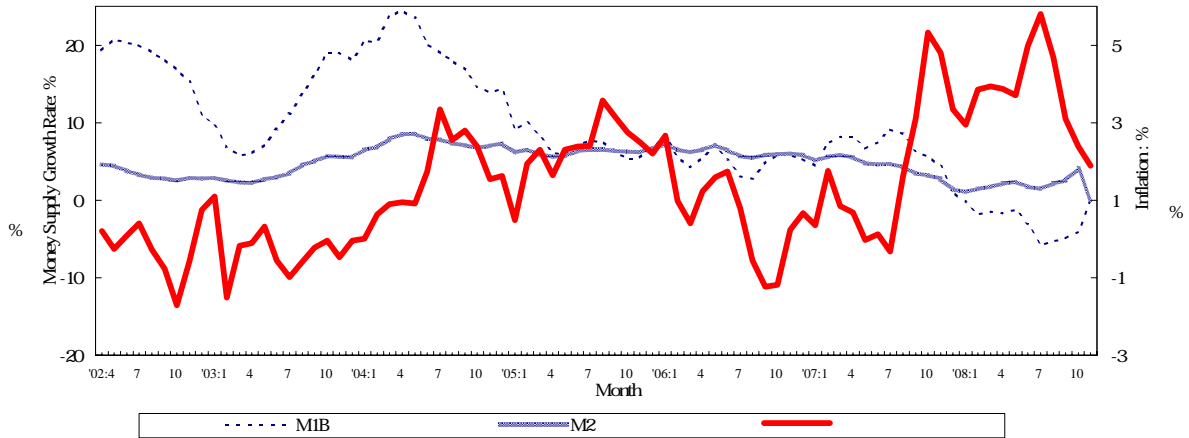
Year & Month	Domestic business indicators		( ) Indicators (Score)	Utility ratio of manufacturing Capacity ( )	Ratio of inventor in manufacturing (1996=100)	Un-employment rates ( )	
	6 Leading(six months smoothness year exchange rate)(%)	( ) Coincident(non- trendency cycle fluctuation)(point)					
1996	3.06	-1.0	YB	20	78.25	72.84	2.60
1997	7.42	-0.7	G	27	78.70	67.13	2.72
1998	2.43	-2.8	YB	20	78.84	71.27	2.69
1999	9.77	0.1	YB	22	78.91	65.99	2.92
2000	0.76	6.7	G	26	80.35	65.75	2.99
2001	-7.97	-3.2	B	10	76.28	78.44	4.57
2002	9.64	-1.5	G	23	77.02	69.89	5.17
2003	10.71	-1.3	G	23	78.32	65.65	4.99
2004	9.68	0.9	YR	33	80.08	62.59	4.44
2005	4.53	0.1	YB	22	80.13	66.39	4.13
2006	4.83	0.5	YB	22	80.29	63.65	3.91
2007	4.51	0.1	G	25	80.42	62.33	3.91
2007 11	4.2	2.0	G	28	-	60.2	3.87
2007 12	2.9	2.7	G	29	-	61.6	3.83
2008 1	2.2	2.4	G	29	-	-	3.80
2008 2	1.7	2.7	G	27	-	-	3.94
2008 3	1.2	2.3	G	26	-	-	3.86
2008 4	0.5	1.8	G	27	-	-	3.81
2008 5	-0.3	0.5	YB	22	-	-	3.84
2008 6	-1.1	-0.6	YB	20	-	-	3.95
2008 7	-2.7	-1.8	B	16	-	-	4.06
2008 8	-4.7	-3.9	YB	18	-	-	4.14
2008 9	-6.6	-6.4	B	12	-	-	4.27
2008 10	-5.9	-9.4	B	12	-	-	4.37

Source Council for Economic Planning & Development, ROC, "Business Indicators of Taiwan."  
Dept. of Statistics, Ministry of Economic Affairs, "Domestic & Foreign Express Report of Economic Statistics Indicators".

Note R:Red,overheating; G:Green,stable; B:Blue,recession; YR:between Y & R; YB:between Y & B

## Table 5. Prices and Financial Situation

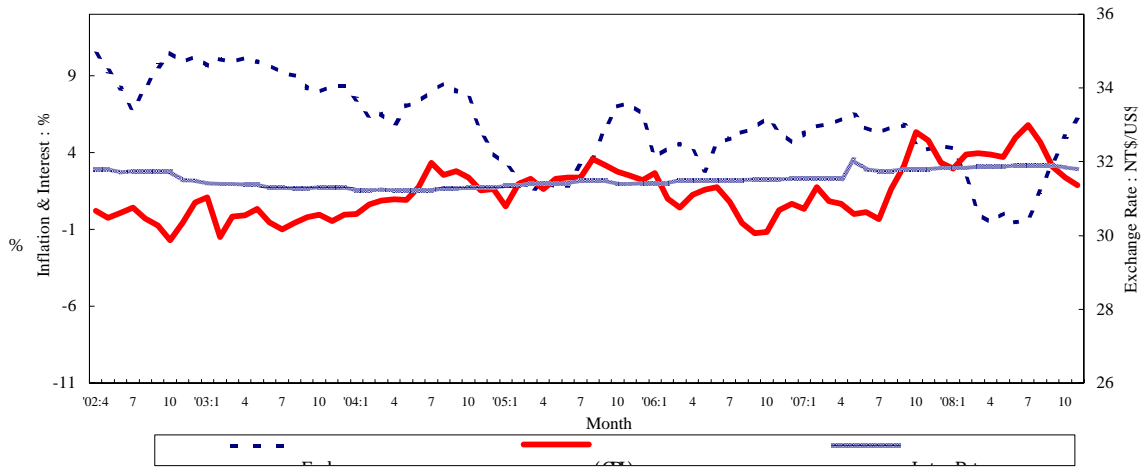
Money Supply Growth Rate and Inflation



Year & Month	( 90 =100) Wholesale Prices (2001=100)		( 90 =100) Consumer Prices (2001=100)		Money Supply (Annual Growth Rate)		
	Index ( )	Annual Rate of Change ( )	Index ( )	Annual Rate of Change ( )	M1A ( )	M1B ( )	M2 ( )
1996	104.15	-1.01	96.10	3.08	-0.50	4.13	9.23
1997	103.68	-0.45	96.96	0.89	7.74	13.82	8.26
1998	104.30	0.60	98.60	1.69	0.39	2.52	8.76
1999	99.55	-4.55	98.77	0.17	3.09	9.87	8.33
2000	101.36	1.82	100.01	1.26	7.36	10.58	7.04
2001	100.00	-1.34	100.00	-0.01	-4.69	-1.02	5.79
2002	85.78	-14.22	99.80	-0.20	8.59	17.01	3.55
2003	87.91	2.48	95.62	-4.19	11.28	11.82	3.77
2004	94.09	7.03	97.17	1.61	21.10	18.98	7.45
2005	94.67	0.61	99.41	2.31	7.65	7.10	6.22
2006	100.00	5.64	100.00	0.60	5.72	5.30	6.22
2007	106.47	6.47	101.80	1.80	6.80	6.44	4.25
2007 12	110.52	8.61	103.52	3.33	4.26	1.07	1.36
2008 1	111.27	10.10	102.91	2.94	3.26	-0.30	1.06
2	110.64	8.77	104.23	3.86	-0.10	-1.84	1.43
3	110.42	7.19	103.10	3.94	0.50	-1.45	1.75
4	111.98	6.33	104.22	3.88	0.78	-1.66	2.12
5	115.06	7.93	104.27	3.71	2.45	-1.14	2.34
6	117.17	9.85	106.18	4.97	1.85	-3.04	1.70
7	119.00	11.44	106.77	5.81	0.28	-5.77	1.45
8	117.66	9.35	107.04	4.68	-0.51	-5.32	2.11
9	115.44	6.07	106.40	3.10	-0.59	-4.89	2.54
10	110.82	1.59	107.91	2.39	1.64	-4.08	4.09
11	104.94	-4.95	106.74	1.88	--	--	--
1-11	113.13	6.63	105.43	3.73	--	--	--

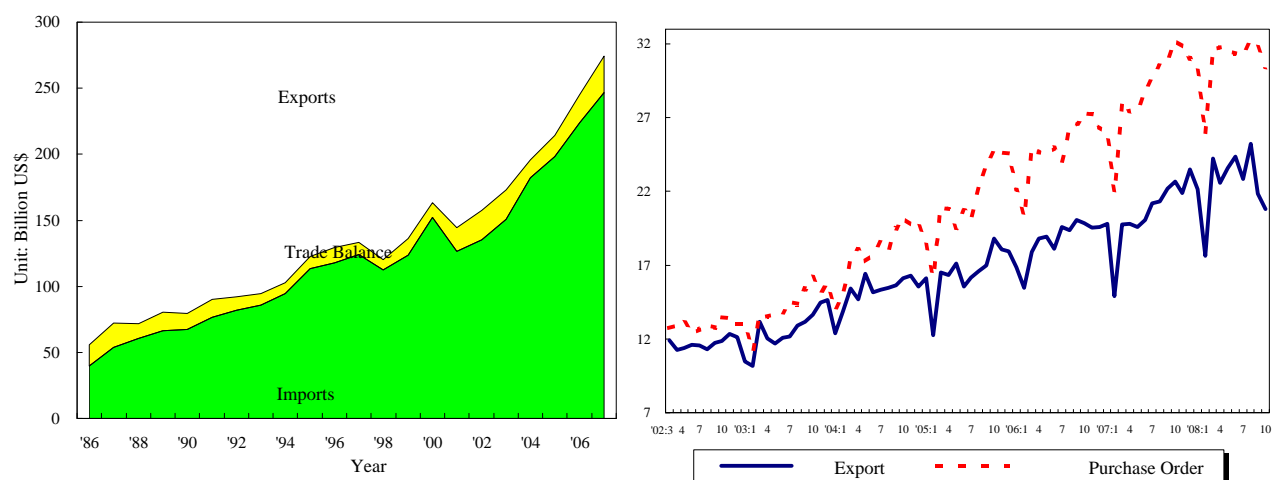
Source Economic Research Department, The Central Bank of China. Financial Statistics Monthly, Taiwan District ROC.

Interest Rate, Exchange Rate and Inflation



Year & Month	Weighted Average Interest Rates on Deposits ( )	Short Term Loans (1 Year, Max) Interest Rate ( )	180 Commercial Paper Primary Mkt.(180d) Interest Rate ( )	Stock Prices		Exchange Rate	
				Index ( )	Annual Rate of Change ( )	NT\$ Against US\$	NT\$ Against Yen
1996	5.79	7.68	6.23	6,004	8.30	27.46	0.2524
1997	5.36	7.58	7.07	8,411	40.09	28.66	0.2369
1998	5.72	8.01	7.04	7,738	-8.00	33.44	0.2555
1999	5.00	7.84	5.38	7,427	-4.02	32.27	0.2833
2000	4.62	7.86	5.62	7,847	5.66	31.23	0.2897
2001	4.09	7.78	4.17	4,907	-37.46	33.80	0.2781
2002	1.83	7.46	2.75	5,247	6.91	34.58	0.2757
2003	1.11	7.10	1.80	5,144	-1.96	34.42	0.2969
2004	1.08	7.07	1.61	6,033	17.30	33.43	0.3089
2005	1.34	7.32	2.00	6,090	0.94	32.18	0.2920
2006	1.61	7.53	2.19	6,842	12.35	32.53	0.2797
2007	1.90	7.93	2.74	8,489	24.08	32.84	0.2789
2007 12	2.09	8.07	3.00	8,309	8.90	32.42	0.2888
2008 1	2.09	8.10	3.00	7,923	1.38	32.37	0.3007
2	2.09	8.10	3.00	7,999	2.32	31.61	0.2950
3	2.09	8.10	3.10	8,440	10.08	30.60	0.3036
4	2.13	8.14	3.10	8,878	11.09	30.35	0.2961
5	2.13	8.14	3.10	8,910	9.95	30.60	0.2939
6	2.15	8.14	3.15	8,180	-4.66	30.37	0.2841
7	2.19	8.16	3.15	7,128	-23.83	30.41	0.2847
8	2.19	8.16	3.15	7,071	-19.25	31.19	0.2854
9	2.17	8.16	3.15	6,204	-31.59	31.96	0.2994
10	1.98	8.20	3.05	5,043	-47.50	32.69	0.3258
11	--	8.20	2.90	4,510	-48.75	33.12	0.3414
12	--	--	--	--	--	--	--

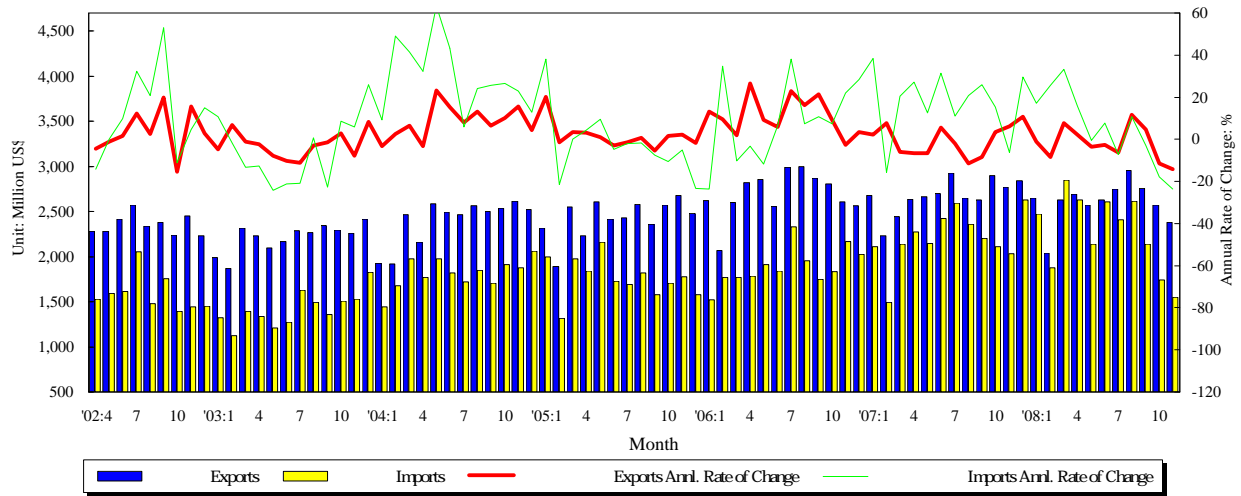
### Table 6. Foreign Trade Values



Year & Month	Export & Import Values of Foreign Trade					Purchase Order for Exports	
	( ) Amount (Mil. US\$)	Annual Rate of Change ( )	( ) Amount (Mil. US\$)	Annual Rate of Change ( )	( ) Trade Balance	( ) Amount (Mil. US\$)	Annual Rate of Change ( )
1996	117,581	3.74	105,922	1.84	11,659	118,959	4.76
1997	124,170	5.60	114,955	8.53	9,215	123,797	4.07
1998	112,595	-9.32	105,230	-8.46	7,366	118,843	-4.00
1999	123,733	9.89	111,196	5.67	12,537	127,474	7.26
2000	151,950	22.80	140,732	26.56	11,218	153,424	20.36
2001	126,314	-16.87	107,971	-23.28	18,344	135,714	-11.54
2002	135,317	7.13	113,245	4.89	22,072	150,952	11.23
2003	150,600	11.29	128,010	13.04	22,590	170,028	12.64
2004	182,370	21.10	168,758	31.83	13,613	215,087	26.50
2005	198,432	8.81	182,614	8.21	15,817	256,393	19.20
2006	224,017	12.89	202,698	11.00	21,319	299,313	16.74
2007	246,677	10.12	219,252	8.17	27,425	345,814	15.54
2007 12	23,477	19.74	21,260	27.47	2,217	31,024	17.56
2008 1	22,133	11.85	20,619	14.83	1,515	30,305	16.89
2	17,625	18.29	15,965	25.99	1,661	25,880	18.08
3	24,240	22.70	24,113	37.50	127	31,618	12.79
4	22,587	13.94	21,601	17.72	986	31,768	15.69
5	23,589	20.47	21,373	17.58	2,216	31,511	14.46
6	24,343	21.24	22,837	22.37	1,506	31,361	9.27
7	22,860	7.91	23,182	11.83	-322	31,364	5.52
8	25,211	18.24	25,257	39.79	-46	32,130	5.38
9	21,850	-1.62	21,039	10.43	810	31,790	2.82
10	20,805	-8.29	17,857	-7.02	2,948	30,412	-5.56
11	16,780	-23.28	15,261	-13.21	1,519	--	--
1-11	242,023	8.43	229,104	15.71	12,919	--	--

Source Department of Statistics, Ministry of Finance, "Primary Statistics of Export & Import"

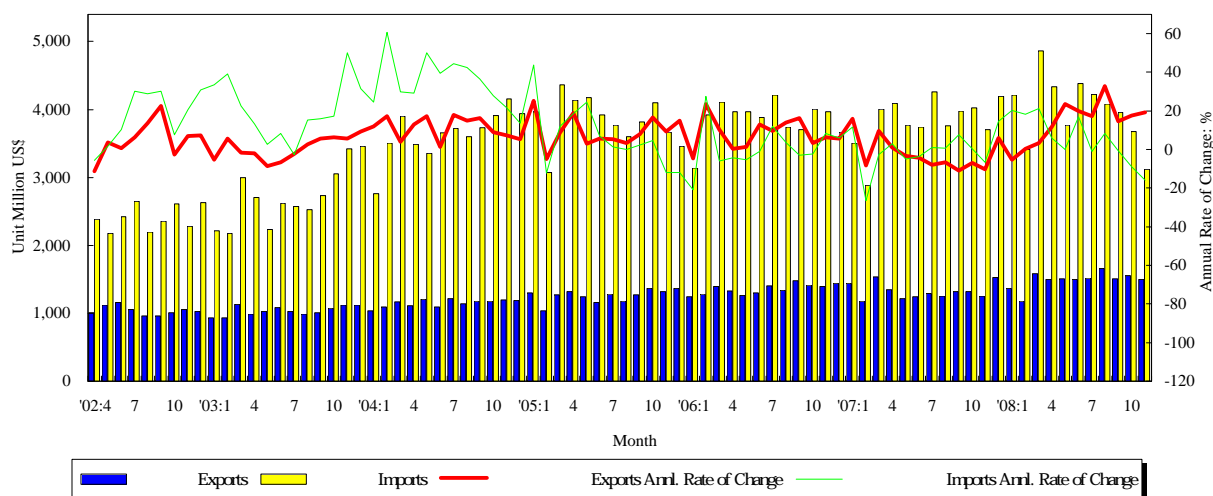
Table 7. Trade with the United States



Year & Month	Exports			Imports			Trade Balance	Total Trade Amount	
	( ) Amount (Mil. US\$)	Annual rate of change (%)	Export share (%)	( ) Amount (Mil. US\$)	Annual rate of change (%)	Export share (%)	( ) Amount (Mil. US\$)	( ) Amount (Mil. US\$)	Annual rate of change (%)
1996	26,866	1.74	22.85	19,972	-3.85	18.86	6,895	46,838	-0.72
1997	29,552	10.00	23.80	23,234	16.33	20.21	6,318	52,786	12.70
1998	29,959	1.38	26.61	19,845	-14.59	18.86	10,114	49,804	-5.65
1999	31,339	4.61	25.33	19,818	-0.14	17.82	11,521	50,595	1.59
2000	35,588	13.56	23.42	25,270	27.51	17.96	10,319	59,941	18.47
2001	28,136	-20.94	22.27	18,407	-27.16	17.05	9,728	45,884	-23.45
2002	27,365	-2.74	20.22	18,256	-0.82	16.12	9,110	45,621	-0.57
2003	26,554	-2.97	17.63	16,995	-6.90	13.28	9,558	43,549	-4.54
2004	28,751	8.27	15.77	21,780	28.16	12.91	6,971	50,531	16.03
2005	29,114	1.26	14.67	21,171	-2.80	11.59	7,943	50,285	-0.49
2006	32,361	11.15	14.45	22,664	7.06	11.18	9,696	55,025	9.43
2007	32,077	-0.88	13.00	26,508	16.96	12.09	5,569	58,585	6.47
2007 12	2,843	10.74	12.11	2,627	29.71	12.36	216	5,470	19.11
2008 1	2,652	-1.03	11.98	2,470	17.19	11.98	182	5,121	6.99
2	2,040	-8.50	11.57	1,878	25.52	11.76	162	3,918	5.16
3	2,630	7.74	10.85	2,849	33.35	11.82	-220	5,479	19.70
4	2,692	2.22	11.92	2,630	15.83	12.17	62	5,322	8.52
5	2,568	-3.69	10.89	2,136	-0.59	9.99	432	4,704	-2.30
6	2,631	-2.59	10.81	2,610	7.76	11.43	21	5,240	2.30
7	2,749	-6.17	12.02	2,406	-7.17	10.38	343	5,154	-6.64
8	2,958	11.58	11.73	2,615	10.76	10.35	342	5,573	11.19
9	2,754	4.70	12.61	2,138	-3.03	10.16	617	4,892	1.18
10	2,570	-11.42	12.35	1,738	-17.73	9.73	832	4,308	-14.08
11	2,378	-14.23	14.17	1,552	-23.54	10.17	826	3,929	-18.16
1-11	28,620	-2.10	11.90	25,021	4.78	10.90	3,599	53,641	0.99

Source Dept. of Statistics, Ministry of Finance, "Preliminary Statistics of Export & Import."

### Table 8. Trade with Japan



Year & Month	Exports			Imports			Trade Balance	Total Trade Amount	
	( Amount (Mil. US\$)	Annual rate of change (%)	Export share (%)	( Amount (Mil. US\$)	Annual rate of change (%)	Export share (%)	( Amount (Mil. US\$)	( Amount (Mil. US\$)	Annual rate of change (%)
1996	13,659	3.82	11.62	27,493	-9.16	25.96	-13,834	41,152	-5.23
1997	11,696	-14.37	9.42	29,022	5.56	25.25	-17,326	40,718	-1.05
1998	9,439	-19.30	8.38	27,060	-6.76	25.71	-17,621	36,498	-10.36
1999	12,043	27.59	9.73	30,637	13.22	27.55	-18,594	42,680	16.94
2000	16,887	40.23	11.11	38,622	26.06	27.44	-21,735	55,509	30.06
2001	13,024	-22.87	10.31	25,933	-32.85	24.02	-12,909	38,958	-29.82
2002	12,368	-5.04	9.14	27,363	5.51	24.16	-14,995	39,731	1.99
2003	12,430	0.50	8.25	32,720	19.57	25.56	-20,290	45,149	13.64
2004	13,808	11.09	7.57	43,718	33.61	25.91	-29,910	57,526	27.41
2005	15,111	9.43	7.62	46,053	5.34	25.22	-30,943	61,164	6.32
2006	16,300	7.87	7.28	46,284	0.50	22.83	-29,984	62,585	2.32
2007	15,934	-2.25	6.46	45,937	-0.75	20.95	-30,003	61,870	-1.14
2007 12	1,530	6.05	6.52	4,198	14.49	19.75	-2,668	5,728	12.11
2008 1	1,369	-5.35	6.18	4,216	20.15	20.45	-2,847	5,585	12.71
2	1,181	0.22	6.70	3,415	18.34	21.39	-2,234	4,596	13.08
3	1,584	3.20	6.53	4,864	21.39	20.17	-3,281	6,448	16.35
4	1,500	11.70	6.64	4,338	6.08	20.08	-2,838	5,839	7.47
5	1,507	23.66	6.39	3,767	0.04	17.62	-2,260	5,274	5.82
6	1,495	19.79	6.14	4,378	16.88	19.17	-2,884	5,873	17.61
7	1,513	17.18	6.62	4,220	-0.96	18.20	-2,707	5,733	3.26
8	1,659	32.77	6.58	4,081	8.43	16.16	-2,422	5,739	14.50
9	1,510	14.49	6.91	3,957	-0.60	18.81	-2,446	5,467	3.16
10	1,555	17.70	7.47	3,675	-8.77	20.58	-2,120	5,230	-2.23
11	1,495	19.19	8.91	3,116	-15.85	20.42	-1,621	4,612	-6.98
1-11	16,368	13.63	6.83	44,027	5.48	19.37	-27,659	60,395	7.57

Source Dept. of Statistics, Ministry of Finance, "Preliminary Statistics of Export & Import."